



SLIDE BEARING SERIES 008-02

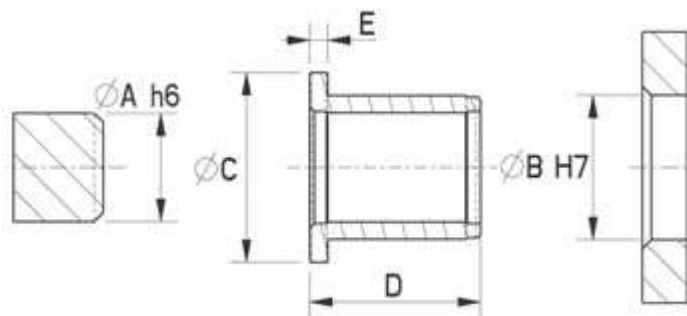


- Made from a special nylon-66 (PA-66), carbon fibre and PTFE compound
- Colour: black
- Very low friction and good heat discharge
- Maximum rotating speed 0.9 m/s
- Friction coefficient 0.11 (statical)
- Suitable for DIN h6-H7 fitting

Examples of use



Dimensions



Dimensions in mm

Article number	Colour	A	B	C	D	E	F
008 7050 114 42		6.0	8.0	12.0	4.0	1.0	
008 7070 114 42		6.0	8.0	12.0	6.0	1.0	




QUALITY PRODUCTS - EXCELLENT SERVICE - SMART DELIVERIES!



008 7090 114 42		6.0	8.0	12.0	8.0	1.0	
008 7110 114 42		6.0	8.0	12.0	10.0	1.0	
008 7130 114 42		8.0	10.0	15.0	5.5	1.0	
008 7150 114 42		8.0	10.0	15.0	7.5	1.0	
008 7170 114 42		8.0	10.0	15.0	10.0	1.0	
008 7190 114 42		8.0	10.0	15.0	15.0	1.0	
008 7210 114 42		10.0	12.0	18.0	6.0	1.0	
008 7230 114 42		10.0	12.0	18.0	9.0	1.0	
008 7250 114 42		10.0	12.0	18.0	12.0	1.0	
008 7270 114 42		10.0	12.0	18.0	15.0	1.0	
008 7290 114 42		12.0	14.0	20.0	9.0	1.0	
008 7310 114 42		12.0	14.0	20.0	12.0	1.0	
008 7330 114 42		12.0	14.0	20.0	15.0	1.0	
008 7350 114 42		12.0	14.0	20.0	20.0	1.0	
008 7370 114 42		14.0	16.0	22.0	12.0	1.0	
008 7390 114 42		14.0	16.0	22.0	17.0	1.0	
008 7410 114 42		15.0	17.0	23.0	9.0	1.0	
008 7430 114 42		15.0	17.0	23.0	12.0	1.0	
008 7450 114 42		15.0	17.0	23.0	17.0	1.0	
008 7470 114 42		16.0	18.0	24.0	12.0	1.0	
008 7490 114 42		16.0	18.0	24.0	17.0	1.0	
008 7510 114 42		18.0	20.0	26.0	12.0	1.0	
008 7530 114 42		18.0	20.0	26.0	17.0	1.0	
008 7550 114 42		20.0	23.0	30.0	11.5	1.5	
008 7570 114 42		20.0	23.0	30.0	16.5	1.5	
008 7590 114 42		20.0	23.0	30.0	21.5	1.5	
008 7610 114 42		25.0	28.0	35.0	16.5	1.5	
008 7630 114 42		25.0	28.0	35.0	21.5	1.5	
008 7650 114 42		25.0	28.0	35.0	30.0	1.5	
008 7670 114 42		30.0	34.0	42.0	16.0	2.0	
008 7690 114 42		30.0	34.0	42.0	26.0	2.0	
008 7710 114 42		30.0	34.0	42.0	37.0	2.0	
008 7730 114 42		32.0	36.0	45.0	16.0	2.0	
008 7750 114 42		32.0	36.0	45.0	26.0	2.0	
008 7770 114 42		35.0	39.0	47.0	16.0	2.0	
008 7790 114 42		35.0	39.0	47.0	26.0	2.0	
008 7810 114 42		40.0	44.0	52.0	30.0	2.0	

QUALITY PRODUCTS - EXCELLENT SERVICE - SMART DELIVERIES!



008 7830 114 42		40.0	44.0	52.0	40.0	2.0	
008 7850 114 42		45.0	50.0	58.0	30.0	2.0	
008 7870 114 42		45.0	50.0	58.0	50.0	2.0	

INFORMATION (all information is given in good faith but without warranty!)

Colour description : jet black

Matches : Reasonably matches RAL colour 9005 and TRESPA A90.0.0

Featured colours reserved. Due to the screen differences in colour may occur.

Material: PA66 + C + PTFE
Material number: 42



General information

This engineering plastic was especially developed for high performance applications. The polyamid 66 compound contains carbon fibre and PTFE . The carbon fibre contributes to better mechanical characteristics (allowing higher forces), better heat discharge of slide bearings and reduced wear. The PTFE causes reduced friction and less abrasive wear.